

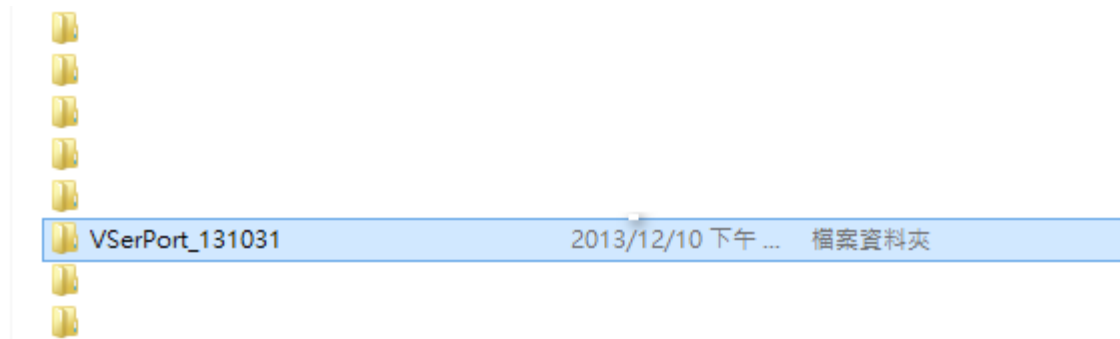
# Virtual COM Utility QIG

1. Save  
VSerPort\_131031  
folder in PC

2. Open Folder  
VSerPort\_131031

3. Open 64-bit folder

4. Execute  
VserPortConsole  
file

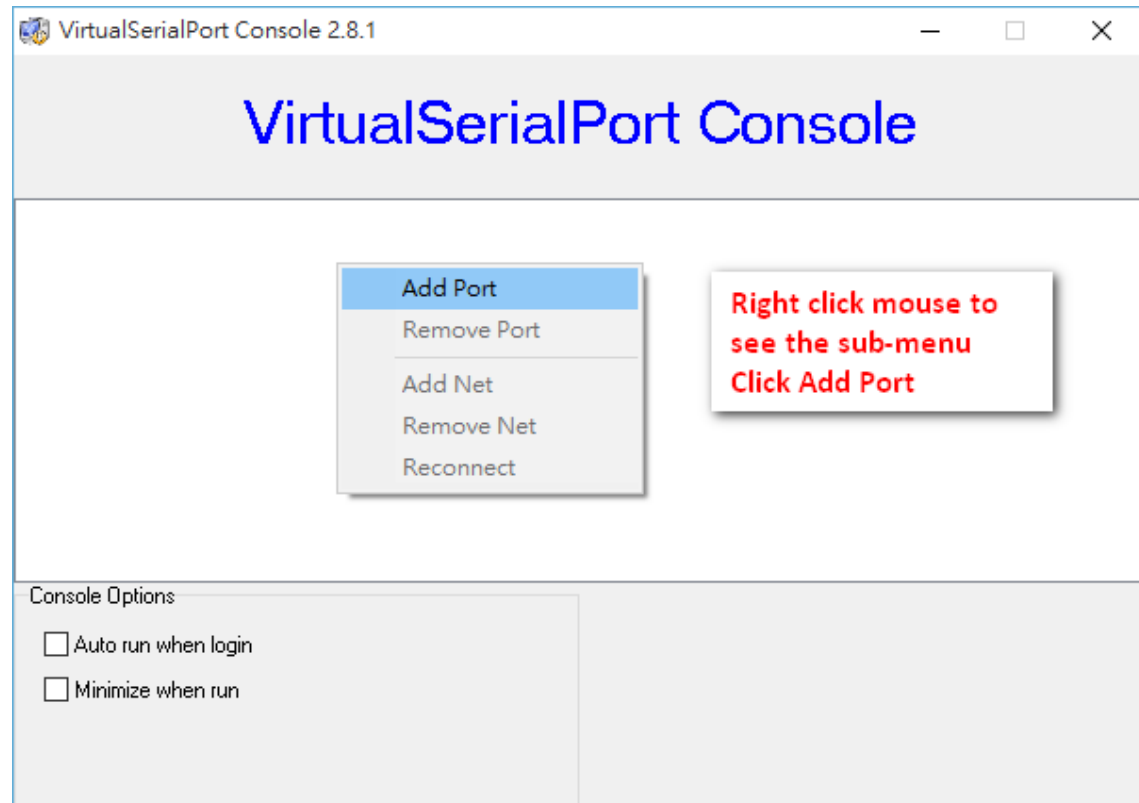


32-bit  
64-bit

Double click to open

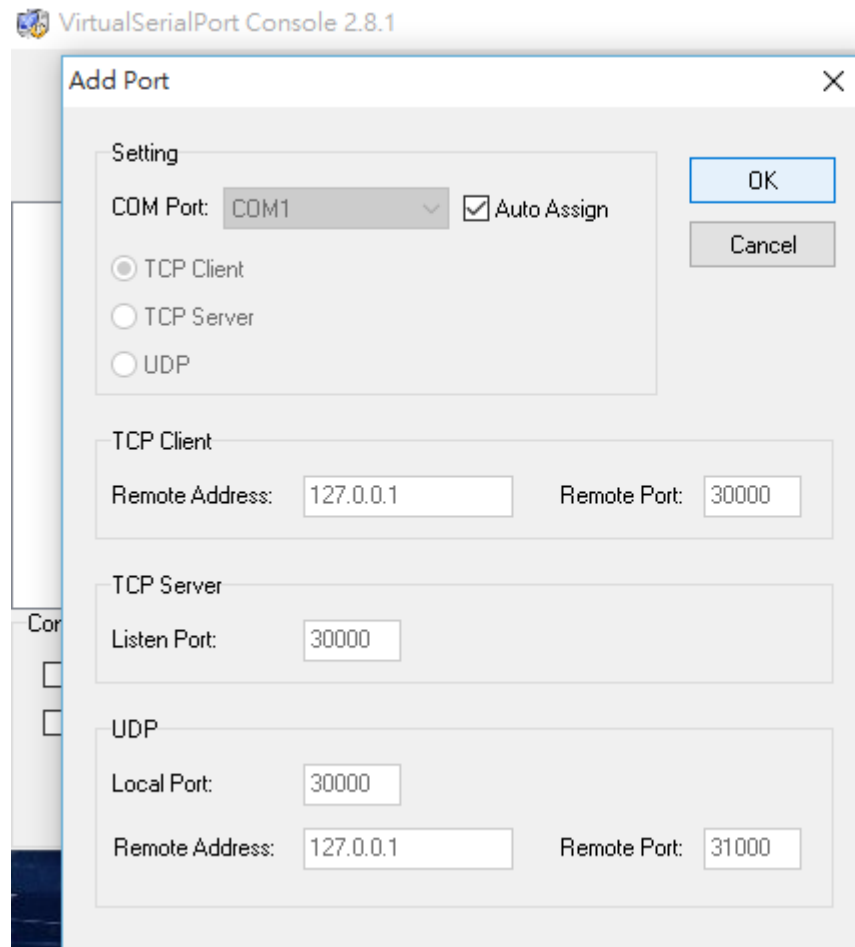


5. Add virtual COM by right click mouse to check sub-menu
6. Click on Add Port

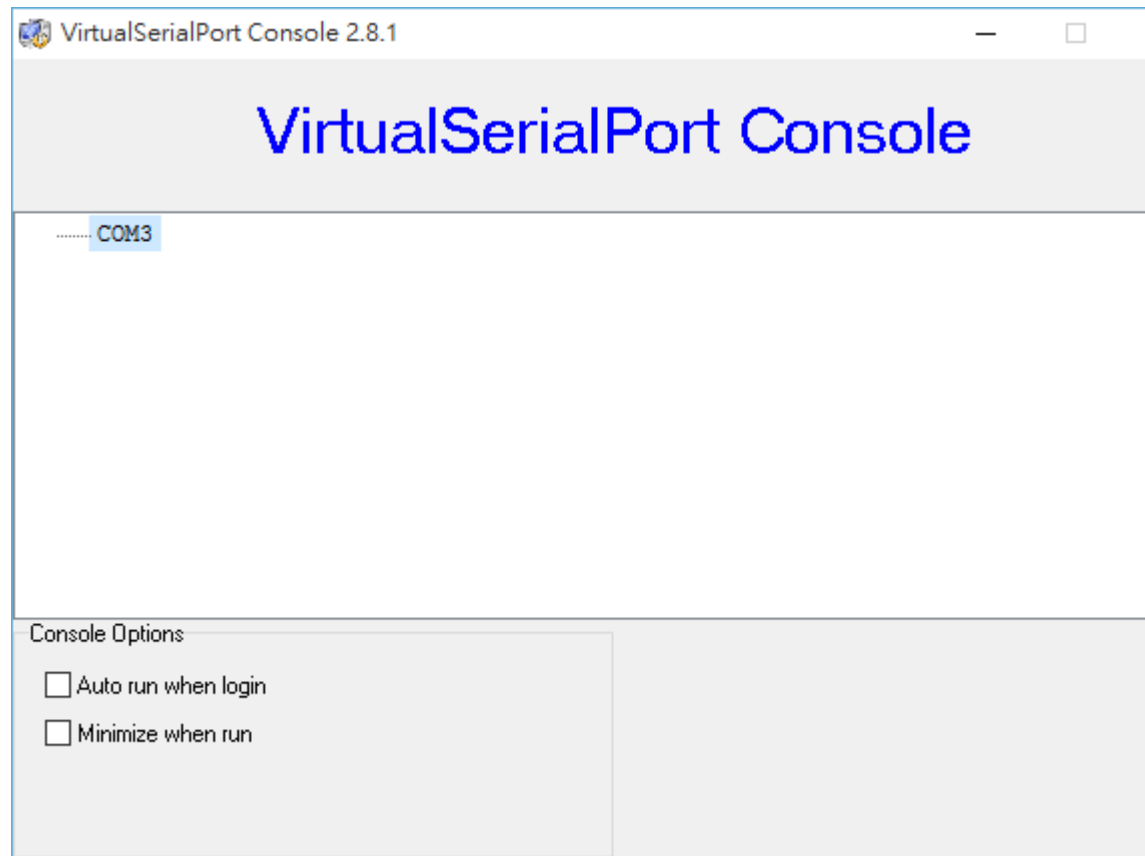
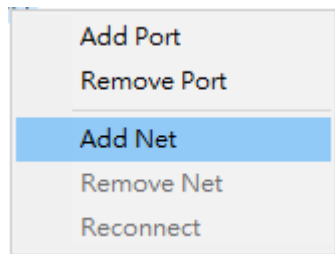


5. Make sure “Auto Assign” option is checked.

6. Press OK



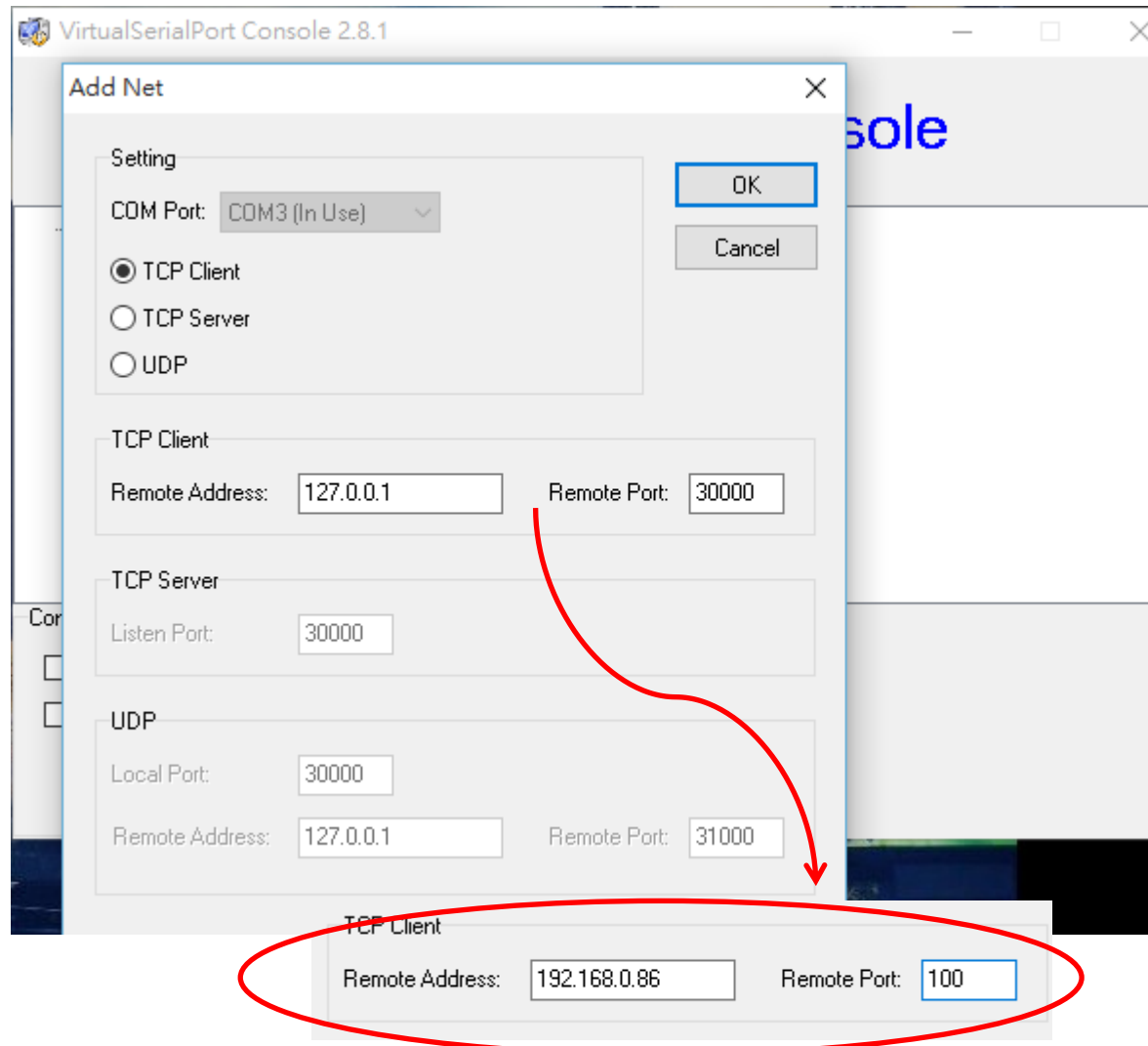
7. COM3 appears
8. Right Click mouse to see sub-menu
9. Then Click “Add Net”



10. Add Net page shown

11. Input E-P132-W IP address and Port number  
(Please note E-P132-W should be TCP server)

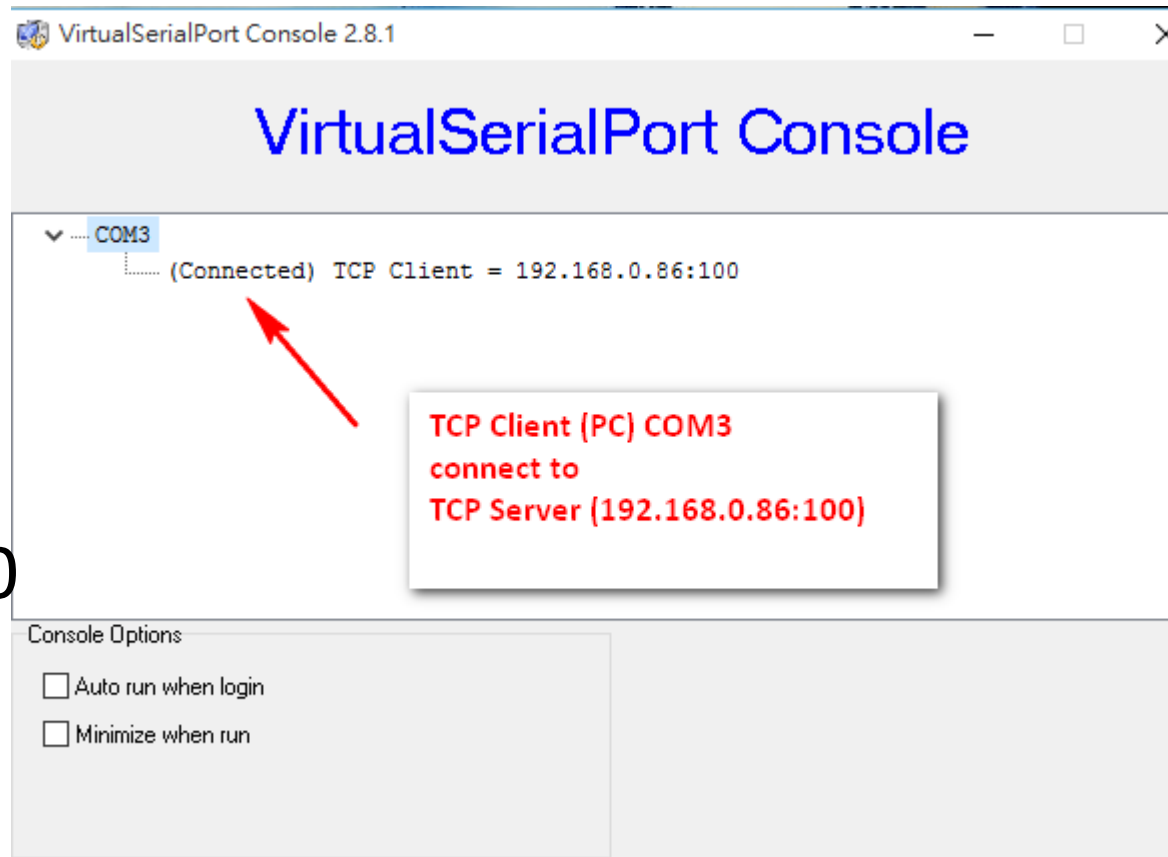
12. Then Click OK



13. Connect  
Successfully

14. TCP Client (PC);  
TCP server (E-  
P132-W)

15. OS is Window 10  
Home edition



Windows 版本

Windows 10 家用版

© 2015 Microsoft Corporation. All rights reserved.

系统





















